



# **User manual**

## Safera Airis Stove Guard



# Safera Airis Stove Guard

## User Manual

Congratulations for buying the Safera Airis Stove Guard. This guide describes the use and maintenance of the product. Please read these instructions carefully before installing and using the system and keep them for future reference.

We wish you safe and enjoyable cooking!

### Manufacturer

The product is designed and manufactured by Safera, a Finnish company of experts in cooking safety.



### Safera Oy

Tekniikantie 4  
02150 Espoo, Finland

### Product support

support@Safera.com

### Contents

1. Introduction
2. Stove Guard Description
3. Using the Stove Guard
4. Maintenance
5. Personalizing the stove guard
6. Troubleshooting
7. Specifications
8. CE Conformity
9. Warnings and Limitations of Liability
10. Safera's Warranty and License Terms and Conditions

# 1. Introduction

Follow these instructions carefully and pay particular attention to the instructions marked in the following way:

## ▲ WARNING

Follow instructions marked with a warning accurately to prevent injury to persons and damage to property.

## 📌 ATTENTION

Follow instructions marked with a note carefully to prevent damage to property.

## 💡 HINT

Hints give you useful hints on using the appliance.

## 1.1 Important Use and Service Information

### ▲ WARNING

This device is designed to EN 50615 Category B - prevention of fires originating from overheating of oil in pans and pots on a hob. This device may not be suitable for fires originating from flammable materials left in proximity of the hob or on the hob. This device may not be suitable for fires originating from oven.

The Stove Guard must be used for its intended purpose only, as described in chapter 2.1. Safera Oy is not liable for any damages caused by inappropriate use or installation of the appliance.

### ▲ WARNING

The Stove Guard does not replace statutory home fire alarms. Ensure that fire safety at your home follows the local regulations.

### 📌 ATTENTION

Only authorised Safera service personnel are allowed to service the safety system. Use only original Safera parts.

## 1.2 Battery safety information

### ▲ WARNING

Failure to follow the instructions below may cause the batteries to leak fluid and gas, or even explode.

- Do not expose batteries to excessive heat, insert them with wrong polarity, or try to recharge them.
- Always replace all batteries at once, using the same make, model and age for all batteries.
- Do not leave empty batteries inside the device for prolonged periods.
- Recycle the empty batteries properly, do not place in domestic waste.
- If the leaked fluid gets into your eyes, do not rub them, as there is a risk of losing eyesight. Rinse your eyes with water and contact a physician immediately.
- If the leaked fluid gets into your mouth, rinse with water and contact a physician immediately.
- If the leaked fluid gets on your skin or clothes, rinse with copious amounts of water to prevent burns.

## 2. Stove Guard Description

### 2.1 Purpose of Use

Safera Stove Guard is designed to improve the safety of domestic cooking (see compatibility in the Installation manual). It is highly effective at preventing cooking fires.

Always take care when using the cooker and keep children and pets away.

Please note that the appliance is designed to prevent cooking fires. In case of a fire, you must follow appropriate procedures to prevent further damage. If necessary, call Emergency Services, explain the situation calmly and follow the instructions given to you.

#### **▲ WARNING**

Flame cooking is prohibited under the cooker hood.

Safera Stove Guard is meant for household use only. The appliance must not be used in professional kitchens or with cookers and hobs meant for professional use.

### 2.2 Conformity

Safera's CE marking ensures that Safera Airis conform to the required EU requirements and standards. See chapter 8.

### 2.3 Appliance Description

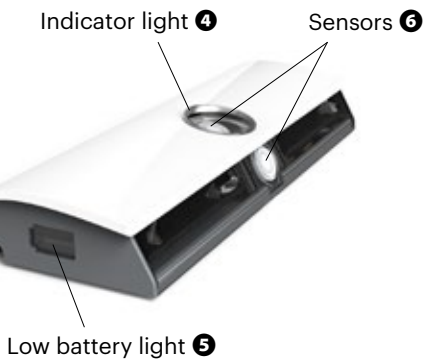
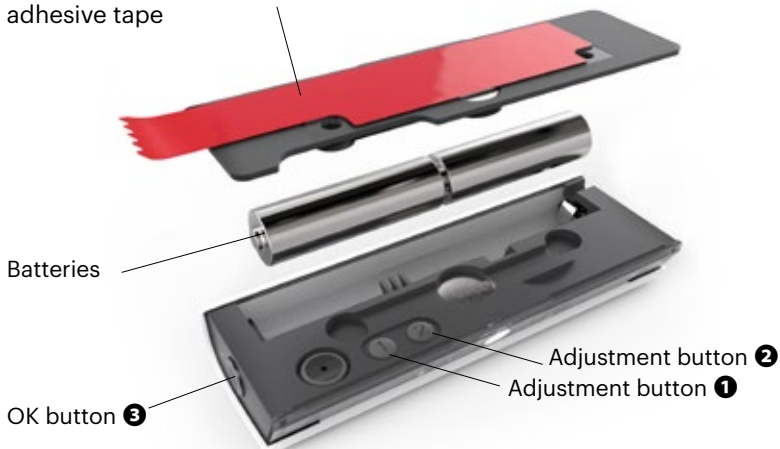
Safera Airis can be mounted on the wall or on the bottom of the cooker hood above the cooker. See adjacent figure.

- Ⓐ Sensor unit
- Ⓑ Mounting bracket
- Ⓒ Power control unit

The Sensor unit Ⓐ and the power control unit Ⓒ are connected via a wireless Safera RobustLink connection, which is designed for safety-critical applications.



Mounting bracket **B** with adhesive tape



## 2.4 Indicator light **4**

| LED color            | Sound | Function                      |
|----------------------|-------|-------------------------------|
| Green                | -     | Cooker ready to use           |
| Red blinking         | Yes   | Cooker danger                 |
| Red blinking slowly  | Yes   | Cooker power has been cut off |
| Blue blinking slowly | Yes   | Water leakage (optional)      |

## 3. Using the Stove Guard

Safera Stove Guard observes the temperature changes and the use of the cooker. The Stove Guard automatically gives an alarm and switches off the cooker and the oven in a hazardous situation based on temperature changes and also if

- the cooker is left on for over 3 hours without anyone using it,
- the cooker has been on for over 5 hours, or
- the oven has been on for over 12 hours without anyone using it.

### 3.1 Setting the Alarm Limit

To ensure safe and reliable operation, you need to set the alarm limit to match the location of the cooker in the kitchen. The alarm limit may also be adjusted in case of frequent false alarms. See Installation manual for further information.

#### **WARNING**

The Stove Guard controls the oven only if the oven is connected to the power control unit (C).

The cooker's hot-hob indicators do not work after the Stove Guard has switched off the cooker. The hob may still be hot.

#### **ATTENTION**

The Stove Guard is designed to avoid raising unnecessary alarms. This means that it allows the temperature to reach high levels during cooking without raising an alarm.

It does not sound an alarm until it looks like the situation may be dangerous.

### 3.2 Automatic Child Proof Lock

By default, the automatic child proof lock is disabled. You can enable it by pressing the adjustment button ① for 5 seconds until you hear two high beeps (••) and the indicator light ④ blinks green twice. This way you can also disable the automatic child proof lock (one low signal with indicator light ④ blinking red).

The automatic child proof lock will prevent the use of the cooker and oven for approx. 10 – 60 minutes after cooking is finished.

To use the cooker when the automatic child proof lock is enabled, press the OK button ③ first and then turn on the cooker. If the OK button is not pressed first, the automatic child proof lock will switch off the cooker power in five seconds.

### 3.3 Other safety features

For safety reasons, the stove guard will prevent the use of cooker and oven, if

- the sensor unit (A) is removed from its original installation position: place the sensor unit back on the mounting bracket (B)
- the batteries are empty: replace the batteries (see chapter 4.3)
- if the sensor unit is (A) faulty: see chapter 6. troubleshooting.

### 3.4 Cooker danger

This is a warning that the cooker is dangerously hot, or when the cooker or oven is left on for too long. An alarm is sounded and the indicator light ④ flashes red. The Stove Guard switches off the cooker and the oven in 15 seconds.

When you hear the alarm:

1. Check the situation calmly. If there is no danger, you can prevent the cooker power from being switched off by pressing the OK button ③ during the alarm and continuing to cook.
2. If you do not press the OK button ③ during the alarm, the Stove Guard will switch off the cooker and the oven: after switch off a repetitive signal is sounded and the indicator light ④ blinks red for 15 minutes.
3. When there is no more danger, you can return the power to the cooker and oven by pressing the OK button ③. First, turn the hob switches to the zero position.
4. Ensure that the hazardous situation will not reoccur.

#### HINT

If the case of frequent false alarms, you can raise the alarm limit, see 3.1.

### 3.5 Water Leakage Detector (optional)

Safera Stove Guard can be equipped with up to four water leakage sensors. When the sensors get wet for example because water drips on them, the detector will sound an alarm with far-spaced signals and indicator light ④ blinks blue.

When you hear the water leakage alarm:

1. Reset the alarm by pressing the OK button ③.
2. Before continuing, make sure the power supply for the cooker is turned off.
3. Find out what caused the alarm and take care of the water leakage.
4. Clean and dry the sensor (F).

#### HINT

If the sensor is left wet, the appliance will give another alarm in 8 hours after signing off the previous one.

## 4. Maintenance

To ensure continued safe and reliable operation, please follow the instructions in this chapter.

### 4.1 Regular maintenance

Follow these maintenance instructions at least every three months or more frequently if needed.

#### 4.1.1 Check the working order

1. Turn on one cooker plate with maximum power. With an induction cooker use a suitable dish.
2. Press and hold the OK-button **3** for 5 seconds: the system should cut off the cooker power.
3. Test that none of the cooker plates and oven (if connected to the stove guard) are operable: if ok, switch off cooker and oven.
4. Return the cooker power by pressing the OK-button **3**: the Indicator Light **4** should blink green once. If not, see Troubleshooting in chapter 6.

Press the OK button **3** to start the self-diagnostics: when the stove guard is in working order, the indicator light **4** will blink in green.

#### ATTENTION

If you press the OK button **3** and the indicator light **4** is not blinking green, the appliance is faulty. See section Troubleshooting.

#### 4.1.2 Cleaning

Wipe the Sensor unit **A** with a cloth moistened with water or a mild detergent, such as washing up liquid, once a month. Avoid pressing the appliance buttons and sensors.

#### ATTENTION

Do not use coarse or abrasive materials to clean the sensor unit **A**.

### 4.2 Battery life and low battery

In normal use, the batteries should last 3-5 years.

The low battery light **5** starts blinking and the stove guards sounds a beep when the battery has approximately two weeks of life remaining. Replace the batteries according to the following instructions.

You may reset the low battery alarm for 12 hours by pressing the OK button **3**.

If the batteries are not replaced in approximately two weeks, the stove guard switches off the cooker power. The low battery light **5** will be blinking until the batteries are completely empty.

### 4.3 Battery replacement

1. Remove the sensor unit (A) from the mounting bracket (B) by pulling it gently.
2. Remove the empty batteries.
3. Place the new AA/LR6 Alkaline batteries in the sensor unit (A). Notice the correct position marked on the bottom of the battery case.
4. Place the sensor unit (A) back onto the mounting bracket (B).

#### ATTENTION

Check the correct position of the batteries marked on the bottom of the battery case.

Use only high quality alkaline batteries.



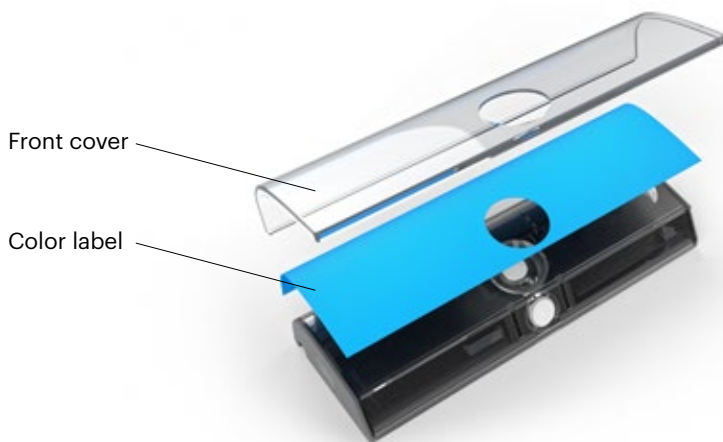
## 5. Personalizing the stove guard

You may change the color of the stove guard with the provided color labels. The stove guard is delivered with 10 different color labels and one transparent front cover and one opaque white front cover.

1. Remove the sensor unit **(A)** from the mounting bracket **(B)** by pulling it gently.
2. Remove the front cover from the sensor unit **(A)** by lifting it from the back of the sensor unit.
3. Place desired color label on top of the sensor unit. Make sure that none of the sensors are masked with the label.
4. Place the transparent front cover on the sensor unit and place the sensor unit **(A)** back onto the mounting bracket **(B)**.

### HINT

You may print your own color label and place it in to the stove guard to match the stove guard perfectly into your kitchen wall.



## 6. Troubleshooting

Press the OK button **3** to find out the problem type. The indicator light **4**:

### Blinks in blue:

- **Once:** Problem with wireless connection.
- **Twice:** Problem with power control unit **C**.
- **Three times:** Power control unit **C** over-heating.

### Blinks in yellow:

- **Once:** Problem with sensors **G**.
- **Twice:** Problem with sensor unit **A**.
- **Three times:** Faulty installation position of the sensor unit **A**: see remedy on the table below.

Please contact your vendor if you cannot solve your problem with these instructions. Until the fault is fixed, use of the cooker is possible for three hours by removing the batteries from the sensor unit **A** and the fuses from the cooker for 10 seconds.

| Problem  | Remedy   |
|--|--|
| Cooker cannot be switched on.  | See chapters 3.2 or 3.3. If the problem persists, press the OK button <b>3</b> to find out the problem type, see the table above.  |
| Faulty installation position of the sensor unit <b>A</b> .   | Sensor unit <b>A</b> will automatically recognize its installation position during the first time the cooker is used for cooking. After the auto-recognition is completed, the stove guard will prevent the use of cooker and oven if the sensor unit <b>A</b> is removed from its original installation position. To enable use of the cooker, place the sensor unit <b>A</b> back to the mounting bracket <b>B</b> and press the OK button <b>3</b> .<br><br>If the problem persists, the auto-recognition might not have been successful. Ensure the correct position of the sensor unit <b>A</b> (see installation manual step 2/2) and manually reconnect the wireless connection according the installation manual chapter 4.2. The fault should be then corrected automatically in two minutes. |
| The appliance repeatedly gives false (the indicator light <b>4</b> blinks red and cooker power is switched off). | Test the working order according to chapter 4. Maintenance. If the appliance is in working order, but the Stove Guard gives repeatedly false alarms, you may adjust the alarm limit of the appliance. See installation manual.   |
| The appliance repeatedly gives false alarms, especially when the oven is in use.                                 | There may have been a mistake in the calibration of the appliance. See installation manual.  |
| The appliance repeatedly gives out water leakage alarms.   | For instructions, see chapter 3.5. If the alarms reoccur, take off the fuses for the cooker and the oven. Check that the leakage sensors are correctly connected. Put back the fuses.  |

## 7. Specifications

| <b>Sensor Unit</b>                      |  |
|---|--|
| Battery type                            | AA/LR6 Alkaline.   |
| Battery life                            | 3 - 5 years  |
| Wireless connection                     | Safera RobustLink 2,4 GHz. Range 10 - 100 m, depending on the building structure   |
| Pollution degree                        | 2  |
| <b>Power Control Unit</b>               |  |
| Compatibility                           | Most electric cookers and hobs used in private homes. See specific compatibility on the label of the power control unit ©. |
| Power supply                            | See the label of the power control unit ©.   |
| Power consumption                       | 2 W<br>(PCU6.3 = 4 W)  |
| Control type                            | IEC/EN 60730 - 1 : Type 1.B  |
| Pollution degree                        | 2  |
| Impulse voltage rating                  | 4 kV   |
| Operational ambient temperature         | See the label of the power control unit ©.   |
| Ball pressure test rating               | 100 °C   |
| PTI of insulation materials             | 175...400  |
| Designed number of automatic actuations | 6000   |
| IP class                                | See power control unit   |

## 8. CE Conformity

Safera Oy ensures that Airis fulfills all compliant EU directives and standards:

EN 50615:2015 (Category B), Particular requirements for devices for fire prevention and suppression for electric hobs (cooktops), 2014/35/EU, 2014/30/EU, 2011/65/EU, 2012/19/EU, 1999/5/EC, 2014/53/EU, EN 60730-1:2011, EN 60335-1:2012, EN 60335-2-31:2012, EN 300 328 (V1.8.1), EN 301 489-1: 2011 (V1.9.2), EN 301 489-17: 2009 (V2.1.1), ETSI EN 300 440-2 (V1.4.1), EN 55014-1:2006 / CISPR 14-1, EN 55022:2010, EN 61000 -family, EN 50581:2012.



---

Espoo Finland 16.3.2020  
Mikko Reinikainen, CEO

# 9. Warnings and Limitations of Liability

## ▲ WARNINGS

EVEN IF A Safera PRODUCT IS USED, THE END USER MUST ALWAYS USE THE COOKER, OVEN AND OTHER OBJECTS POSSIBLY SUPERVISED BY A Safera PRODUCT RESPONSIBLY AND SAFELY, AND THE END USER MUST CONSTANTLY SUPERVISE THEIR USE. A Safera PRODUCT IS NOT A SUBSTITUTE TO AND DOES NOT REPLACE THE FIRE ALARMS REQUIRED BY LAW AND DOES NOT NECESSARILY PREVENT FIRE OR PREVENT OR REDUCE ANY OTHER DAMAGE AND DOES NOT NECESSARILY GIVE AN ALARM OF ANY DAMAGE OR A RISK THEREOF. THE END USER MUST ALWAYS TAKE CARE OF FIRE SAFETY AS SET FORTH IN REGULATIONS. A Safera PRODUCT MUST BE USED ACCORDING TO ITS USER MANUAL.

## ▲ WARNINGS

THE Safera PRODUCTS DO NOT DIMINISH OR REMOVE THE END USER'S RESPONSIBILITY TO FOLLOW THE APPLICABLE REGULATIONS OR AUTHORITIES' ORDERS OR THE RESPONSIBILITY TO ACT WITH DUE CARE TO AVOID DAMAGE TO PROPERTY AND PERSONS. THE END USER IS RESPONSIBLE FOR MAINTAINING IN FORCE ITS INSURANCES FOR PROPERTY AND PERSONS. Safera SHALL NOT BE LIABLE FOR ANY DAMAGE TO PROPERTY OR PERSONS OR FOR ANY MONETARY OR FINANCIAL DAMAGES CAUSED BY THE FUNCTIONING OR NON-FUNCTIONING OF A Safera PRODUCT, TO THE EXTENT

THE MANDATORY LAW ALLOWS THIS KIND OF DISCLAIMER.

To the extent mandatory law does not prohibit the following provisions:

- (a) The Distributor's warranty and other terms govern the sole right of an end user to make claims based on defects in the Safera products, and such claims shall be made towards the Distributor;
- (b) Safera is not liable for loss of income or other indirect or any other damages that are difficult to predict;
- (c) Safera's liability, including price returns and reductions, is limited to the Safera product's purchase price, which has been paid to Safera for the respective Safera product.

# 10. Safera's Warranty and License Terms and Conditions

## 10.1 Applicability of the Warranty

Safera Oy ("Safera") gives to its new products ("Product") a limited manufacturer's warranty to end users of the Product in accordance with these Safera's Warranty and License Terms and Conditions. The warranty applies to the Defects (as defined in Section 6) covered by the warranty, which are notified to Safera during the warranty period. This limited warranty does not limit a consumer's right to claim the rights according to the mandatory applicable consumer protection legislation.

## 10.2 Start of the Warranty Period

The warranty period starts from the date of the first purchase of the Product. In case the Product has been installed ready to a new apartment, the date of the purchase shall be deemed to be the date of first purchase of the apartment. In case the Product is installed by the end user, the end user shall inspect the Product prior to the installation and without delay inform the seller of the Product about the defects or errors in the Product or its delivery.

## 10.3 Warranty Period

The warranty period shall be twenty-four (24) months.

## 10.3.1 Warranty to a Repaired Product

Warranty for a Product that has been repaired or replaced shall be the original warranty period of the Product which was repaired or replaced.

In addition, Safera gives to the spare parts used in the warranty repair of the Product an additional three (3) months warranty starting from handing over of the warranty repair. Otherwise warranty repair does not extend the original warranty period.

## 10.4 Work Included in the Warranty

Based on the warranty the Defects covered by the warranty will be repaired or the Product will be replaced (as Safera selects) without expense, provided that Safera was informed about the warranty claim during the warranty period. The repair or replacement will be made within a reasonable time during normal working hours in Safera's repair shop, in a repair shop authorized by Safera or in other place designated by Safera, such as in the premises where the Product is installed.

## 10.5 How to Act

For the warranty service, the end user shall contact primarily the seller of the Product. The end user may also contact Safera or a repair shop authorized by Safera. Information about the warranty service is in the Product's user manual or on Safera's website.

Safera, the seller of the Product or a repair shop authorized by Safera (de-

pending on with whom the end user is in contact) informs the end user of how and when the warranty repair will be performed. In case this has not been informed to the end user within a reasonable time, the Product shall be delivered to the nearest Safera's repair shop or a repair shop authorized by Safera.

The original parts which have been replaced under the warranty shall be Safera's property and shall be delivered to Safera.

## **10.6 Preconditions for Warranty Repair**

Warranty is valid on condition that the Product has a defect attributable to material or manufacturing or it otherwise does not substantially conform to its written specifications ("Defect") and that:

- (a) the Defect has been noticed in usage conditions deemed normal and it can be reproduced in such conditions,
- (b) the instructions for installation, use and maintenance have been followed,
- (c) the Product has been maintained or repaired by using original spare parts and supplies,
- (d) the warranty claim is made by the owner of the Product or its representative,
- (e) the owner of the Product or its representative notifies the Defect during the warranty period and within a reasonable time after noticing it, and shall be responsible for the Product's condition until it has been handed over for repair. Upon the handing over Safera shall be given

a declaration about the Product's purchase date, order references, itemization of the Defect and description of the Product's usage conditions.

In the event it is noticed, that the Defect is not covered by the warranty, Safera has the right to charge for the work and the expenses caused by searching and location of the Defect or error according to Safera's valid price list. Safera has also the right to charge the end user for an agreed repair of the Defect or error not covered by the warranty.

For the avoidance of doubt it is stated, that marketing materials are not Product specifications.

## **10.7 Limitations of Warranty**

The warranty does not cover:

- (a) repair of Defects, which are due to normal wear and tear, failures in installation, use or maintenance, faulty or deficient repair made by others than Safera or a repair shop authorized by Safera, usage conditions in contradiction with the instructions or choosing by end user of a Product that is not suitable for the use in the premises where the Product is used or is wrong size or capacity;
- (b) repair of Defects, in case the Product has been repaired or modified by others than Safera's repair shop or a repair shop authorized by Safera;
- (c) repair of a Defect caused by external factors, such as accident, fluctuation of electricity or air conditioning, lightning, fire or water;
- (d) use of the Product in combination

with any other product not accepted by Safera in the user manual or otherwise in written form, or usage in usage environment not accepted by Safera in the user manual or otherwise in written form.

## 10.8 Software License

The software included and/or embedded in the Products may be used only as integrated in the Products when using the Products in their designed use. The software may not be separated from the Product, or used separately from the Product or used in connection with the use of other products or as part of other products. The software may not be

- (a) copied or otherwise reproduced (possible reinstallation shall be performed by Safera or a repair shop authorized by Safera),
- (b) modified, disassembled, decompiled or reverse engineered or
- (c) delivered to third parties other than as part of the Product when assigning the Product's ownership.

The end user is granted only the right to use the software in accordance with this provision. Copyright and other intellectual property rights in and to the software shall belong to Safera.

## 10.9 Dispute Resolution

These terms shall be construed in accordance with the laws of Finland excluding its choice of law provisions and the UN Convention on Contracts for the International Sale of Goods.

To the extent the mandatory applicable legislation does not regulate otherwise,

all disputes arising out of these terms shall be finally settled under the Rules for Expedited Arbitration Board of Arbitration of the Central

Chamber of Commerce of Finland by one (1) arbitrator appointed by the said arbitration institute, in English language. The arbitration shall take place in Helsinki, Finland.

Notwithstanding the above, Safera shall be entitled to seek equitable and/or injunctive relief in court of law of end user's or Safera's domicile.